

Of all the things you wear,  
your expression is the  
most important.

~ Janet Lane

Galilee Community Development Corporation is a not for profit 501(c) 3 corporation servicing Prince George's County, Maryland and the metropolitan area.

The DORCAS program accepts clothing and accessories for men, women and children including shoes, small household items, and toys.

A donation drop box is located on the grounds of Galilee.

Donation receipts can be obtained by bringing your items to the office on Tuesday or Thursday.



Dr. Lloyd T. McGriff, Chairman of the Board

Louise Lyles, Executive Director GCDC

Toni Greene, Director, DORCAS Clothing  
Outreach Center



2101 Shadyside Avenue  
Suitland, Maryland 20748

Phone: 240-455-4208  
[www.galilee-cdc.org](http://www.galilee-cdc.org)

## Galilee Community Development Corporation

*MAKING A DIFFERENCE  
IN THE LIVES OF OTHERS*

## DORCAS CLOTHING OUTREACH CENTER



2101 Shadyside Avenue  
Suitland, Maryland 20748

Phone: 240-455-4208  
[www.galilee-cdc.org](http://www.galilee-cdc.org)

*MAKING A DIFFERENCE IN THE LIVES OF OTHERS*

— THROUGH CLEAN, WEARABLE CLOTHING, WE CAN ENHANCE SELF IMAGE, SELF-CONFIDENCE AND SELF-ESTEEM

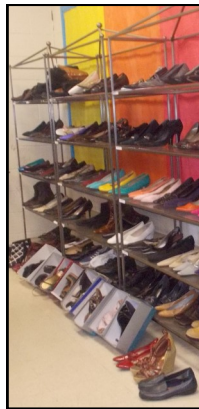
---

The **DORCAS CLOTHING OUT-REACH CENTER** was established in November 2000 by Laura Brown. The program mission is to provide clean, wearable clothes for those who seek support. Through this provision, DORCAS helps to enhance personal self-image, self-confidence, and self-esteem.

Volunteers are available to assist with clothes selections on Tuesdays and Thursdays.

For emergency assistance on Monday, Wednesday or Friday, community residents may contact the office.

Clothes are free. There is no proof of residency requirement.



#### DORCAS CLOTHING OUTREACH CENTER

operation hours:

Tuesdays and Thursdays

10:00am until 2:00pm

#### CLOTHING FAIR

Volunteers working the August 2014 Clothing Fair assisted 70 families in selecting needed clothing items for back-to-school and for the upcoming fall season.



#### Galilee Community Development Corporation

2101 Shadyside Avenue  
Suitland, Maryland 20748

Phone: 240-455-4208  
[www.galilee-cdc.org](http://www.galilee-cdc.org)